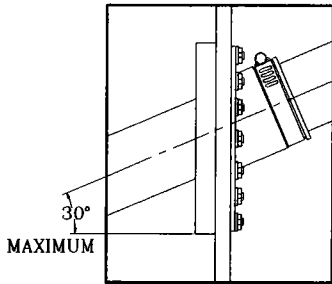
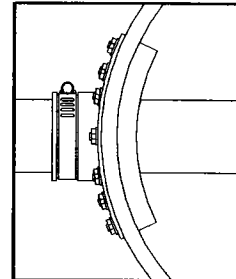


# FLEXIBLE ENTRY BOOT



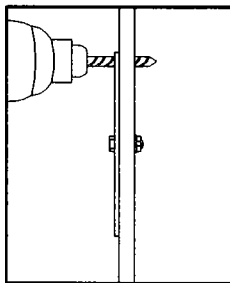
Boot Application For:  
Flat Wall Sumps

PART NO.	DESCRIPTION	HOLE SAW
FB050	1/2" BOOT FITTING	2 3/8"
FB075	3/4" BOOT FITTING	2 3/8"
FB100	1" BOOT FITTING	2 3/8"
FB150	1 1/2" BOOT FITTING	2 3/8"
FB200	2" BOOT FITTING	4 1/4"
FB300	3" BOOT FITTING	4 1/4"
FB350	3 1/2" BOOT FITTING	5 1/2"
FB400	4" BOOT FITTING	5 1/2"
FB600	6" BOOT FITTING	SABRE SAW



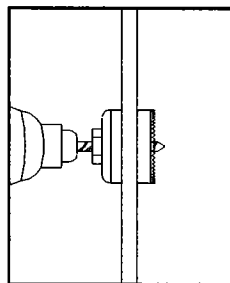
Boot Application For:  
Round Wall Sumps

## FIVE STEP INSTALLATION



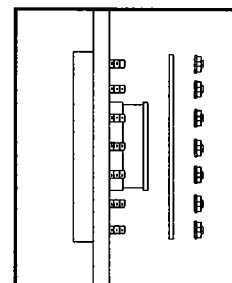
### Step #1

Locate the center entry point in the basin wall and drill the stud holes in the side wall using the guide template and a 5/16" drill bit.



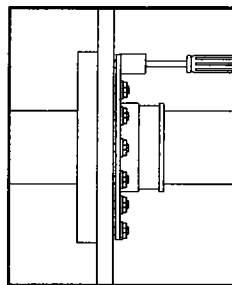
### Step #2

Remove the template and drill the opening hole for the Flexible Entry Boot using the appropriate size hole saw. (see table above)



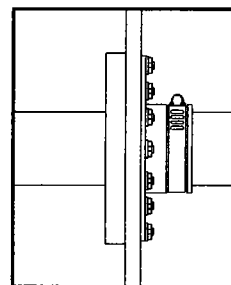
### Step #3

Insert the entry boot through the opening and then install the compression ring and fasteners.



### Step #4

Tighten each of the fasteners firmly with a socket wrench fitted with a 7/16" socket. On round wall applications, tighten each nut in stages so the boot flange and compression ring can evenly conform to the rounded surface.



### Step #5

Insert pipe or conduit through the Flexible Entry Boot. Install and tighten band clamp to 30 in. lbs.



DESCRIPTION		
FLEXIBLE ENTRY BOOT		
REFERENCE		
		10152
DRAWN BY: K. J. H.	CHECKED BY:	SUPERSEDES PRINTS PRIOR TO: 10/17/94
DATE: 10/17/94	REV. 0	NO. 6-180
SCALE NONE	DISK	