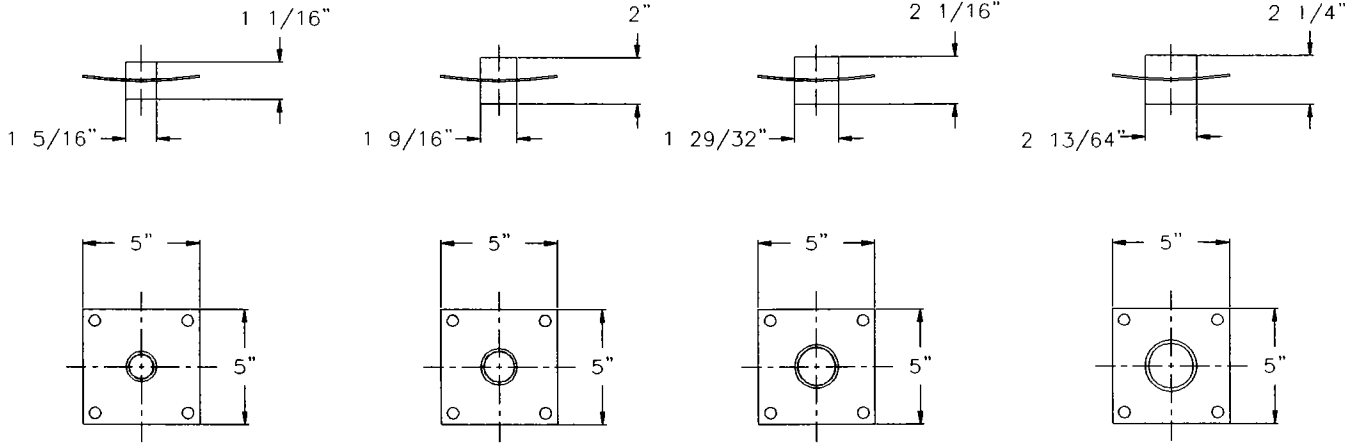


STAINLESS STEEL AND INDUSTRIAL ENAMEL COATED PIPE SEALING COUPLINGS

5/16"x1 1/2" STAINLESS STEEL BOLTS, WASHERS, NUTS AND 3/4"x1/4" CLOSED CELL FOAM ADHESIVE GASKET MATERIAL PROVIDED WITH EACH COUPLING KIT.

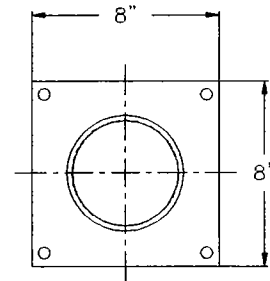
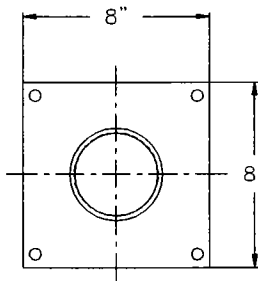
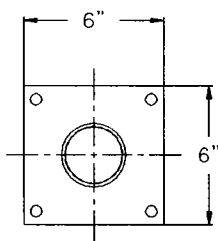
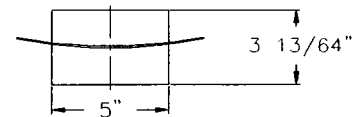
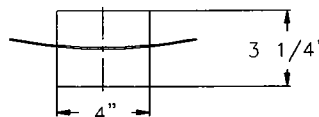
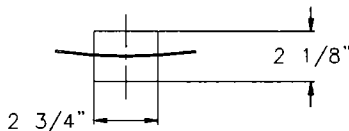


3/4" FPT PIPE COUPLING
PART NO.
C075E- ENAMELED STEEL
C075S- STAINLESS STEEL

1" FPT PIPE COUPLING
PART NO.
C100E- ENAMELED STEEL
C100S- STAINLESS STEEL

1 1/4" FPT PIPE COUPLING
PART NO.
C125E- ENAMELED STEEL
C125S- STAINLESS STEEL

1 1/2" FPT PIPE COUPLING
PART NO.
C150E- ENAMELED STEEL
C150S- STAINLESS STEEL



2" FPT PIPE COUPLING
PART NO.
C200E- ENAMELED STEEL
C200S- STAINLESS STEEL

3" FPT PIPE COUPLING
PART NO.
C300E- ENAMELED STEEL
C300S- STAINLESS STEEL

4" FPT PIPE COUPLING
PART NO.
C400E- ENAMELED STEEL
C400S- STAINLESS STEEL

INSTALLATION INSTRUCTIONS

1. LOCATE PIPE OR COUPLING CENTER.
2. CUT HOLE TO THE OUTSIDE DIAMETER OF THE COUPLING.
3. APPLY GASKET TO COUPLING OR BASIN.
4. PLACE COUPLING AND DRILL HOLES FOR BOLTS
5. INSERT BOLTS, WASHERS, NUTS AND TIGHTEN.
6. DOPE THREADS AND INSERT PIPE.



DESCRIPTION: PIPE COUPLINGS		
REFERENCE 10095		
DRAWN BY: X.J.H	CHECKED BY:	SUPERSEDES PRINTS PRIOR TO 12/23/94
DATE 9-19-94	REV. 1	NO.: 6-160
SCALE: NONE	DISK:	