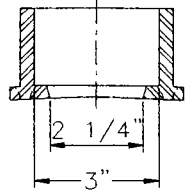
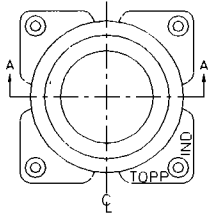
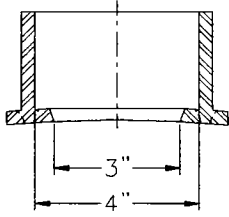
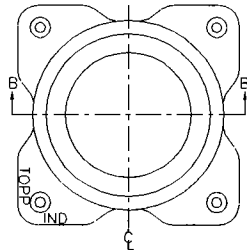


CAST IRON CAULKING HUBS

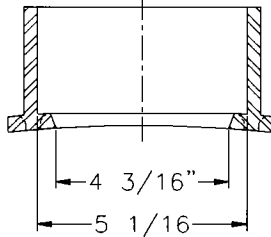
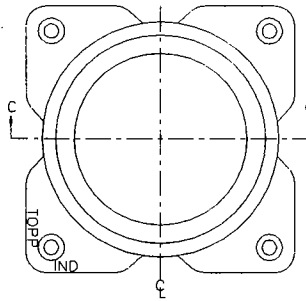
HUB KIT INCLUDES: 5/16"x1 1/2" STAINLESS STEEL BOLTS, WASHERS, NUTS AND 3/4"x1/4" CLOSED CELL FOAM ADHESIVE GASKET MATERIAL.



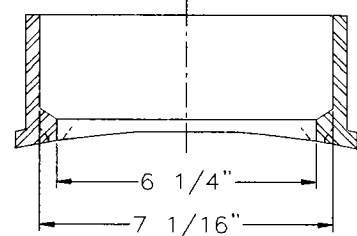
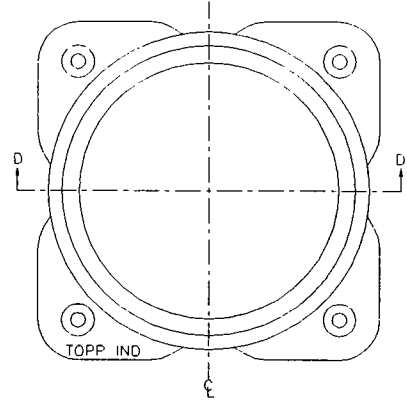
SECTION A-A
PART NO. H200C



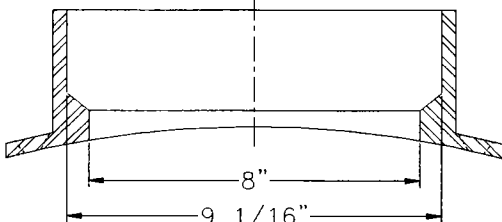
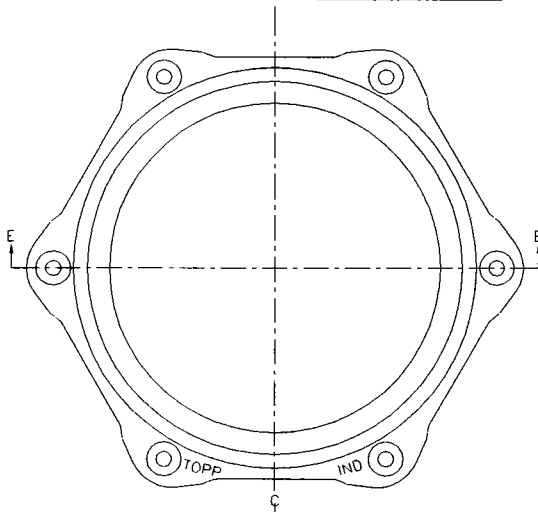
SECTION B-B
PART NO. H300C



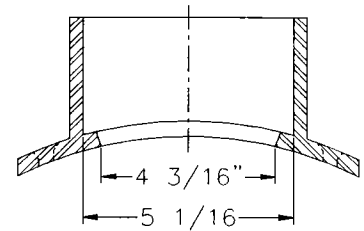
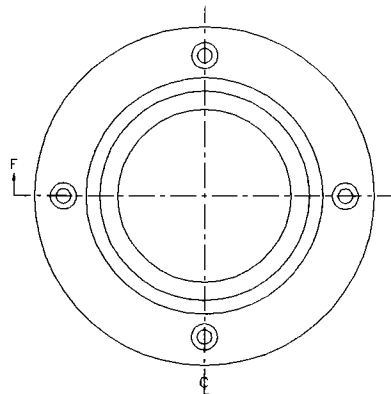
SECTION C-C
PART NO. H400C



SECTION D-D
PART NO. H600C



SECTION E-E
PART NO. H800C



SECTION F-F
PART NO. H400C-18

INSTALLATION INSTRUCTIONS

- 1 LOCATE PIPE OR HUB CENTER
- 2 CUT HOLE TO THE INSIDE DIAMETER OF THE HUB
- 3 APPLY GASKET MATERIAL TO THE HUB OR BASIN.
- 4 ATTACH HUB TO BASIN AND DRILL HOLES FOR BOLTS.
- 5 INSERT BOLTS, WASHERS, NUTS AND TIGHTEN.
- 6 INSERT PIPE INTO HUB AND CAULK



DESCRIPTION:		
CAST IRON HUBS		
REFERENCE		
10092		
DRAWN BY	CHECKED BY	SUPERSEDES PRINTS
X.J.H.		PRIOR TO 03/13/95
DATE	REV:	NO:
9-12-94	1	6-150
SCALE	DISK:	
NONE	09	